



2013-2015 NTG4.5 W212 Installation Guide

E-Class



1. Please power off your original screen before installation.



2. Carefully pry out the frame of the original screen and remove the fixing screws.



3. Pry the buckles on the left side of the air conditioning vent.

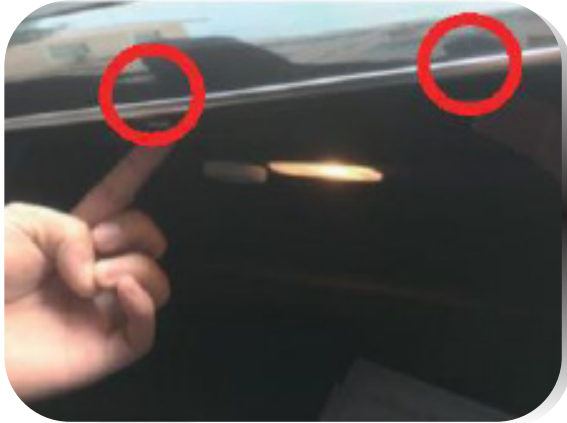


4. Pry the buckles on the right side of the air conditioning vent.



2013-2015 NTG4.5 W212 Installation Guide

E-Class



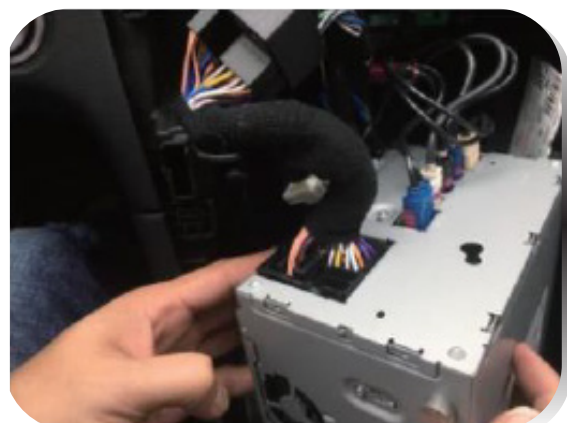
5. Open the glove box and pull down the buckle.



6. Pry the top buckles from the air conditioning vent.
(Note: Ensure the vent is securely fixed when prying the buckles).



7. Remove the left and right fixing screws of the original NTG Unit.



8. Disconnect the power harness from the NTG Unit
and connect it to the Android harness.



2013-2015 NTG4.5 W212 Installation Guide

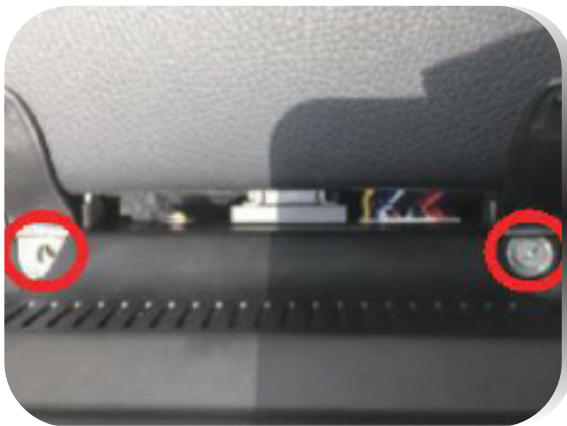
E-Class



9. Assemble the Android screen stand securely onto the original dashboard and route the cables properly.



10. Connect all Android cables securely.



11. Attach the Android monitor to the stand, remove the screw cover, and lock the screws.



12. Installation Complete



2013-2015 NTG4.5 W212 Installation Guide

E-Class



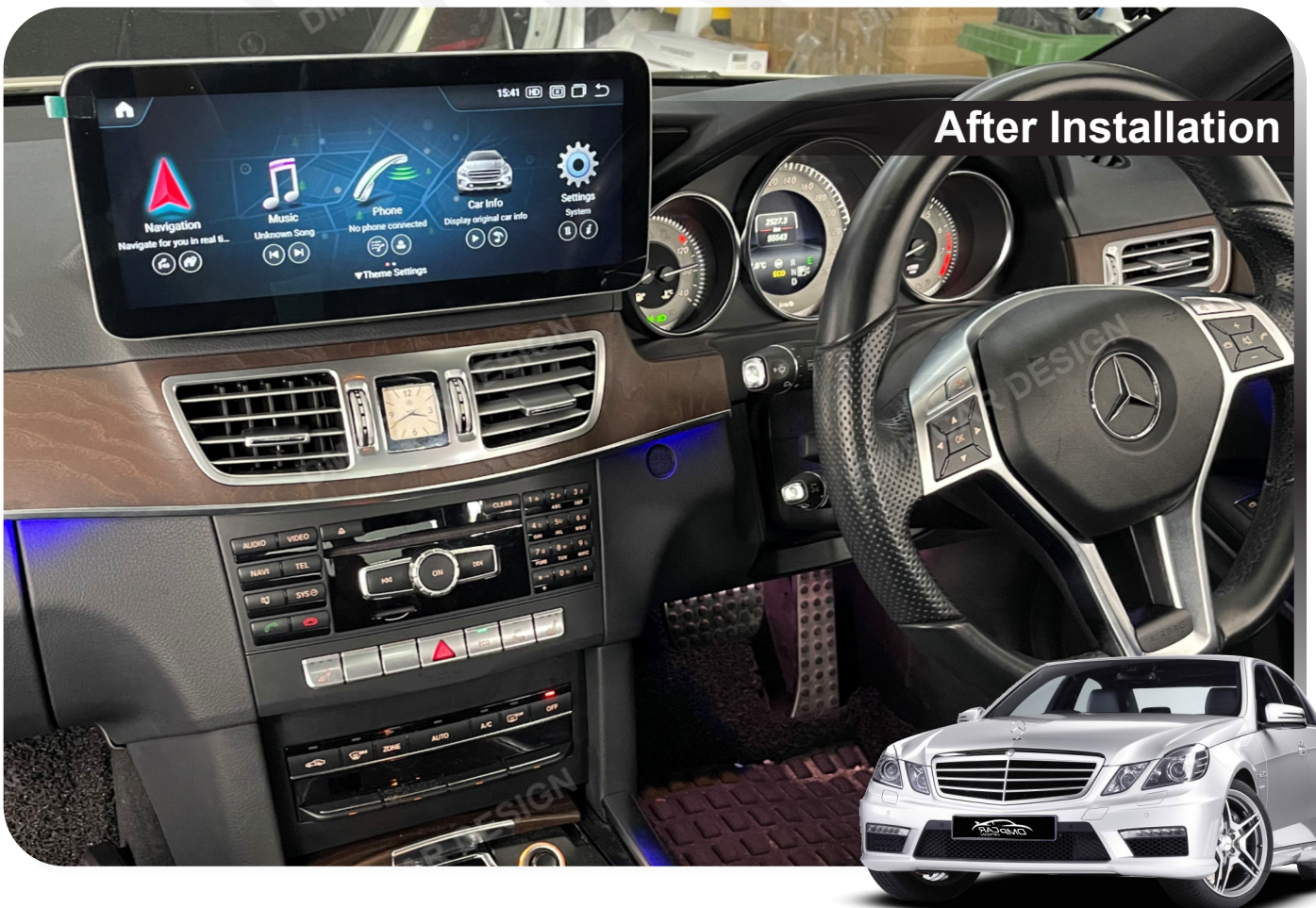
Microphone Mounting Location

It is recommended to install the microphone at the A-pillar, positioned close to the driver's location.



GPS Antenna Mounting Location

It is recommended to install the GPS antenna on the windscreen, specifically behind the rear-view mirror.



After Installation



 [dmpcardesign](#)
 www.dmpcardesign.com
 www.facebook.com/dmpcardesign



2013-2015 NTG4.5 W212 Installation Guide

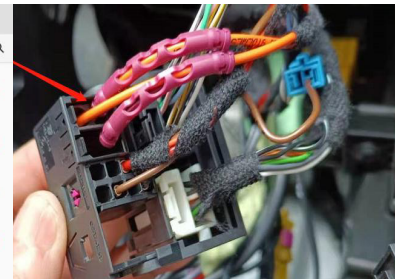
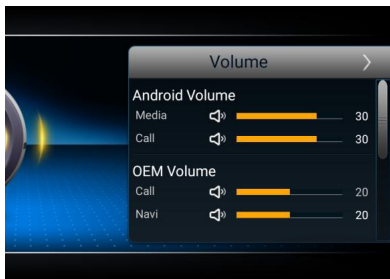
E-Class



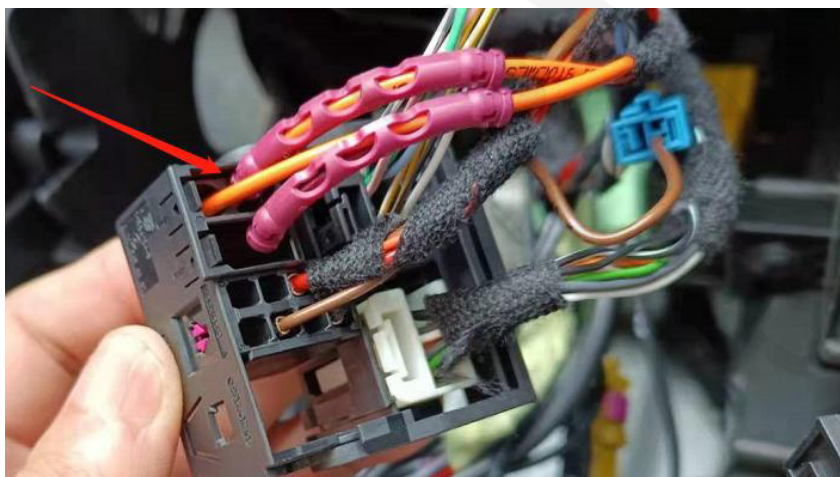
Volume settings

If no sound is heard after the above settings, please check the volume screen and whether the vehicle's fiber optic cable is connected.

- 1) Settings--Volume--Android Volume/OEM Volume
- 2) Settings--Android--Sound

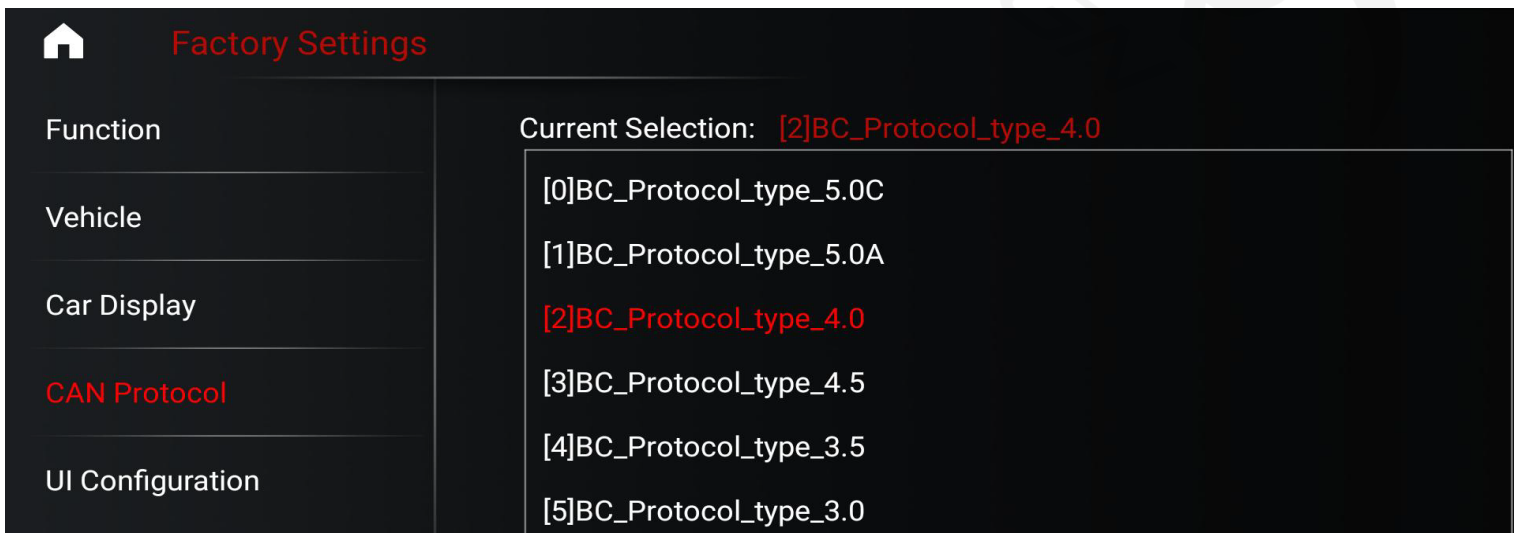


If the car plug has fiber optic plug but without speaker cable, then you need to add a small speaker.



CAN Protocol selection

Settings — Factory (Password 190627) —> Can Protocol : choose 4.0



Note: If the wrong CAN protocol is selected, the display of the air conditioner on the Android screen will not work.

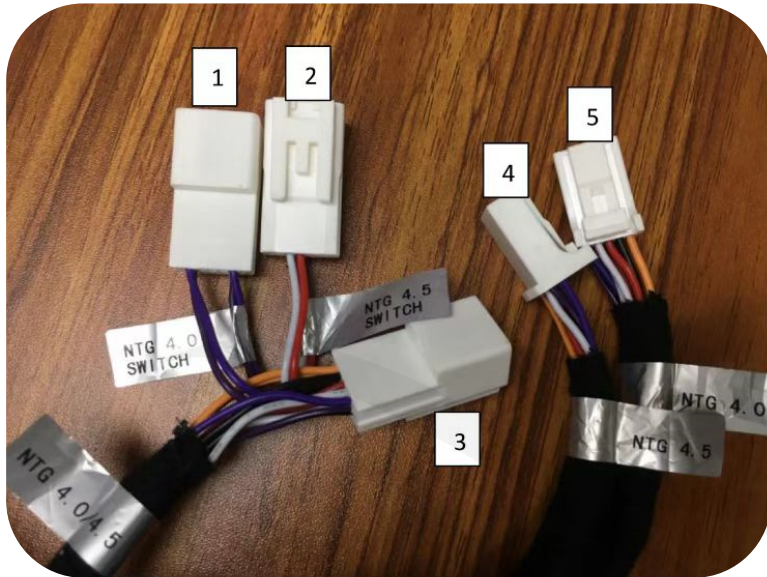


2013-2015 NTG4.5 W212 Installation Guide

E-Class

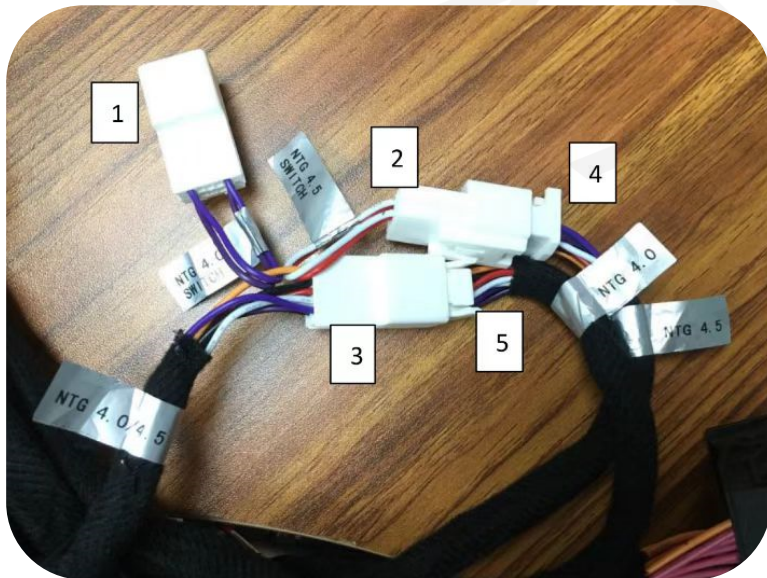


NTG Installation instructions



Label Recognition:

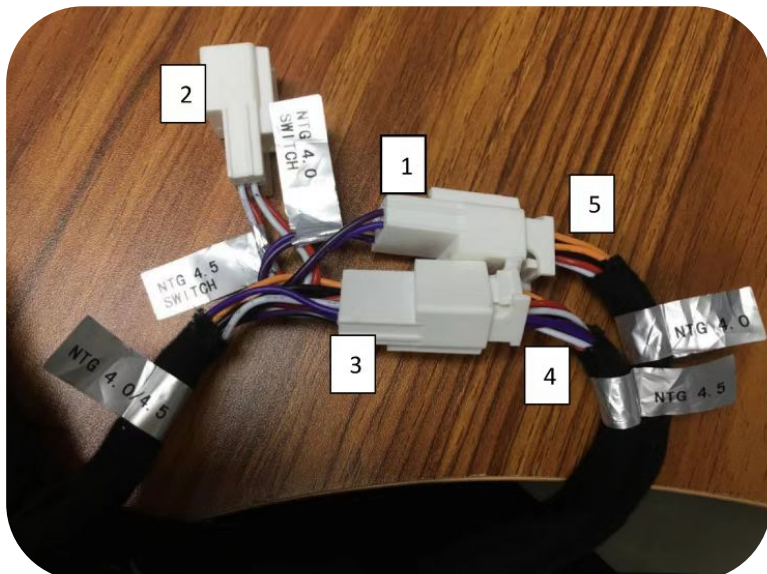
- Label 1: NTG 4.0 SWITCH (Short Connect)
- Label 2: NTG 4.5 SWITCH (Short Connect)
- Label 3: NTG 4.0/4.5 (CAN Universal Connect)
- Label 4: NTG 4.5 (Original Car 4.5 CAN Connect)
- Label 5: NTG 4.0 (Original Car 4.0 CAN Connect)



NTG 4.0

NTG4.0 System Connection:

- Step 1: Label 3 (NTG4.0/4.5) connect Label 5 (NTG4.0)
- Step 2: Label 2 (NTG4.5 SWITCH) connect Label 4 (NTG4.5)
- Step 3: Label 1 (NTG4.0 SWITCH) do not connect

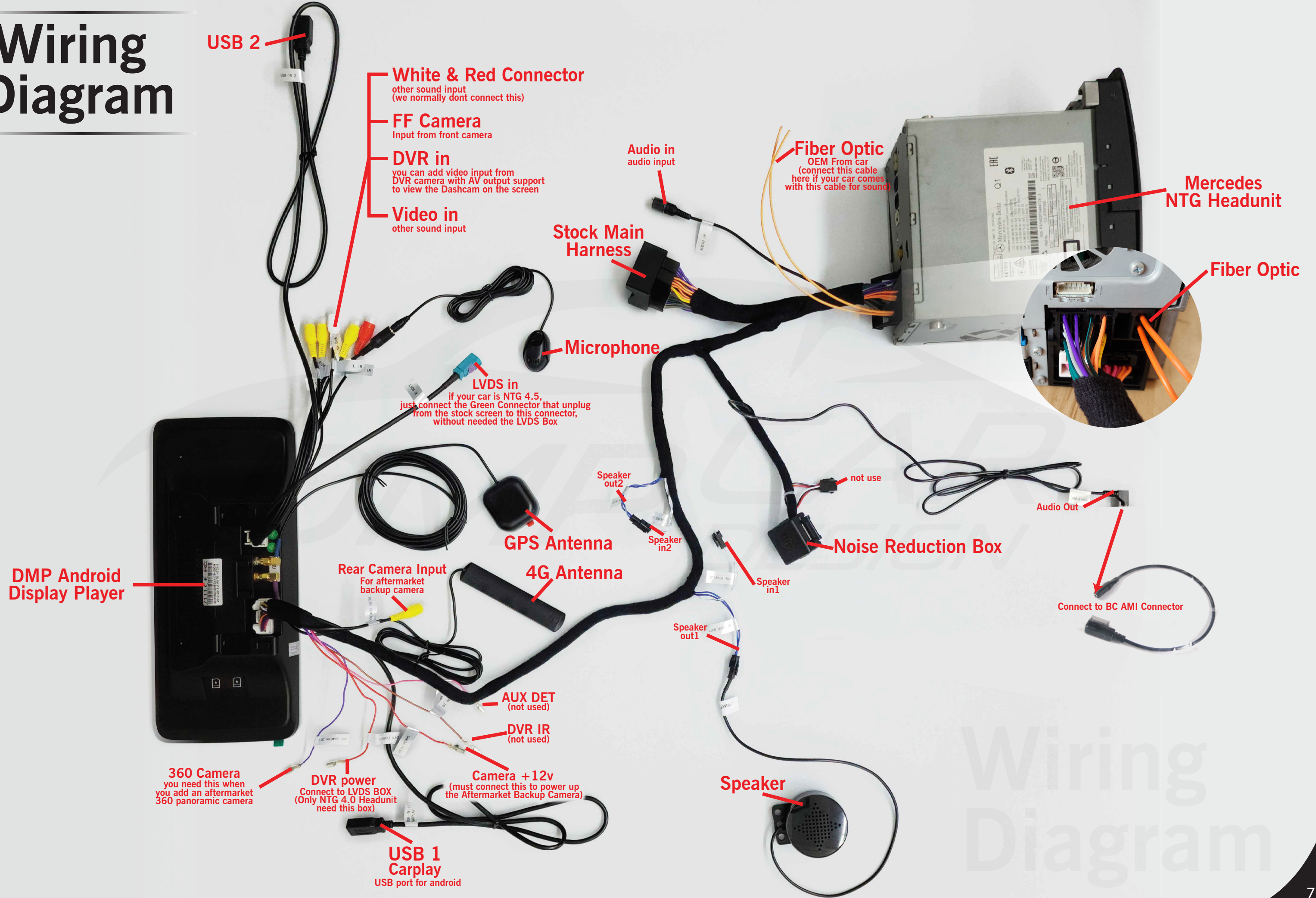


NTG 4.5

NTG4.5 System Connection:

- Step 1: Label 3 (NTG4.0/4.5) connect Label 4 (NTG4.5)
- Step 2: Label 1 (NTG4.0 SWITCH) connect Label 5 (NTG4.0)
- Step 3: Label 2 (NTG4.5 SWITCH) do not connect

Wiring Diagram



Wiring
Diagram